



Raceway: A pre-engineered protective support system for:

Single Tube • Multi-Tube • Electronic Cable

Protect-O-Way



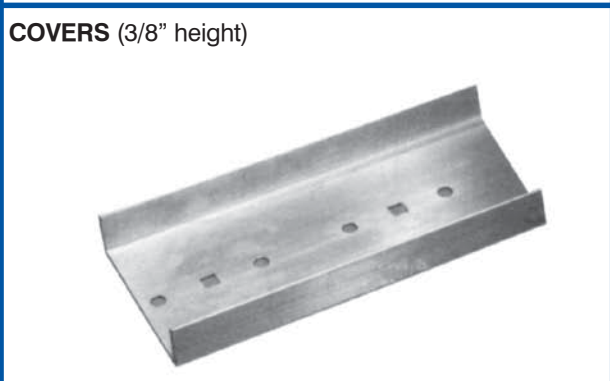


Protect-O-Way

STRAIGHT SECTIONS (7/8" depth)



COVERS (3/8" height)



PROTECT-O-WAY is a pre-engineered protective support system for single tube, multi-tube, electronic and fiber-optic cable. It offers easy, organized, cost efficient installation into power generation and petro-chemical plants, water and sewage systems, paper mills or anywhere instrument tubing is installed.

The system includes straight sections with covers and a complete line of complementing fittings together with an array of various styles of clamping mechanisms.

Channels are 16'-0" long and 7/8" deep, they come complete with connectors, nuts and bolts and are punched every two (2) feet to accommodate carriage bolts with hold-down clamps or j-bolts.

Available in three different materials-6063-T6 aluminum, mill-galvanized steel and stainless steel; **PROTECT-O-WAY** offers a customized system to satisfy your specific application.

Aluminum PROTECT-O-WAY

Channel Part #	Width in. (mm)	Cover Part #
AL10SCP	1" (25.4)	A10CV
AL15SCP	1 1/2" (38.1)	A15CV
AL25SCP	2 1/2" (63.5)	A25CV
AL33SCP	3 3/8" (85.7)	A33CV
AL37SCP	3 3/4" (88.9)	A37CV

Galvanized Steel PROTECT-O-WAY

Channel Part #	Width in. (mm)	Cover Part #
PG10SCP	1" (25.4)	PG10CV
PG15SCP	1 1/2" (38.1)	PG15CV
PG25SCP	2 1/2" (63.5)	PG25CV
PG33SCP	3 3/8" (85.7)	PG33CV
PG37SCP	3 3/4" (88.9)	PG37CV

Stainless Steel PROTECT-O-WAY

Channel Part #	Width in. (mm)	Cover Part #
SS10SCP	1" (25.4)	SS10CV
SS15SCP	1 1/2" (38.1)	SS15CV
SS25SCP	2 1/2" (63.5)	SS25CV
SS33SCP	3 3/8" (85.7)	SS33CV
SS37SCP	3 3/4" (88.9)	SS37CV



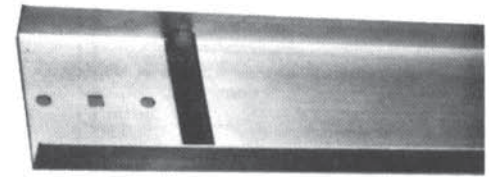
Clamping Devices for Raceway

The various Protect-O-Way clamping devices provide complete flexibility in the use of varying numbers and sizes of cables and tubing.

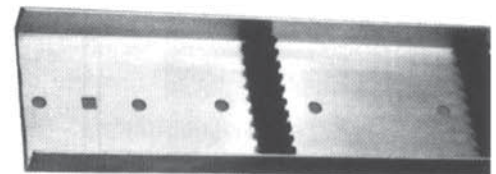
STAINLESS STEEL PUSH CLIPS offer easy installation and firm tube containment by quickly pressing into place at two foot intervals.

The **TUBE CLIP PLATE** has earned industry approval for a secure clamping action which requires the least field effort of any other clamping device. Clip plates are pre-installed at 24" intervals in the supporting channel ready for field use.

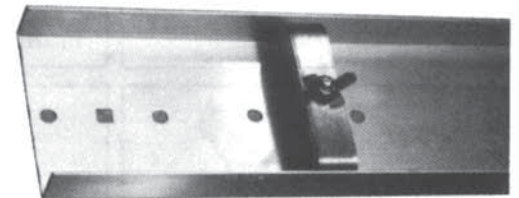
Mounting holes at two-foot intervals along the length of the channel permit use of either carriage bolt, hold-down clamp assemblies or J-bolt, hex-nut assemblies. The **HOLD-DOWN CLAMP** assembly may be used for either single or multiple levels of single tube, electronic or multi-tube cable while the **J-BOLT ASSEMBLY** may be used for attaching large diameter cable or multitube.



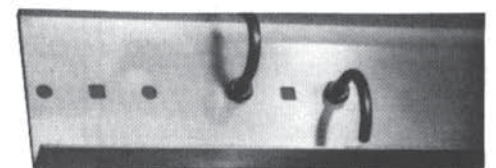
S.S. PUSH CLIP



TUBE CLIP PLATE



S.S. HOLD-DOWN CLAMP
CARRIAGE BOLT & WING NUT ASSEMBLY



J-BOLT & HEX NUT ASSEMBLY

STAINLESS STEEL PUSH CLIP	
Part #	Width
SS10SPC	1"
SS15SPC	1 1/2"
SS25SPC	2 1/2"
SS33SPC	3 3/8"
SS37SPC	3 3/4"

STAINLESS STEEL HOLD DOWN CLAMP	
Part #	Width
SS10SCL	1"
SS15SCL	1 1/2"
SS25SCL	2 1/2"
SS33SCL	3 3/8"
SS37SCL	3 3/4"

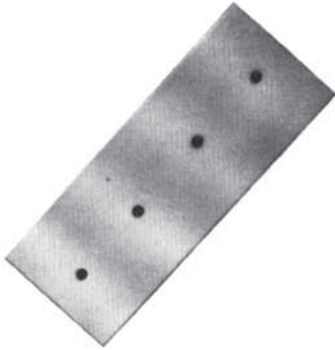
TUBE CLIP PLATE				
Part #	Width	Tube o.d.	Cap.	
10CP25PE	1"	1/4"	2	
10CP28PE	1"	9/32"	2	
10CP37PE	1"	3/8"	1	
15CP25PE	1 1/2"	1/4"	4	
15CP28PE	1 1/2"	9/32"	3	
15CP37PE	1 1/2"	3/8"	3	
25CP25PE	2 1/2"	1/4"	6	
25CP28PE	2 1/2"	9/32"	4	
25CP37PE	2 1/2"	3/8"	5	
33CP25PE	3 3/8"	1/4"	9	
33CP28PE	3 3/8"	9/32"	6	
33CP37PE	3 3/8"	3/8"	7	
37CP25PE	3 3/4"	1/4"	10	
37CP28PE	3 3/4"	9/32"	8	
37CP37PE	3 3/4"	3/8"	8	

CARRIAGE BOLT WING NUT ASSEMBLY		
Length	Zinc Plated	Stainless Steel
3/4"	ZN75CRB	SS75CRB
1"	ZN10CRB	SS10CRB
1 1/4"	ZN12CRB	SS12CRB
1 1/2"	ZN15CRB	SS15CRB
2"	ZN20CRB	SS20CRB
2 1/2"	ZN25CRB	SS25CRB
3"	ZN30CRB	SS30CRB

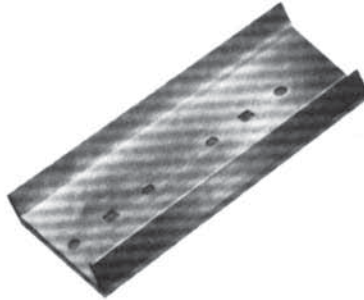
J-BOLT & HEX NUT ASSEMBLY		
Length	Zinc Plated	Stainless Steel
3/4"	ZN25JB07	SS25JB07
1"	ZN25JB10	SS25JB10
1 1/4"	ZN25JB15	SS25JB15
1 3/4"	ZN25JB17	SS25JB17



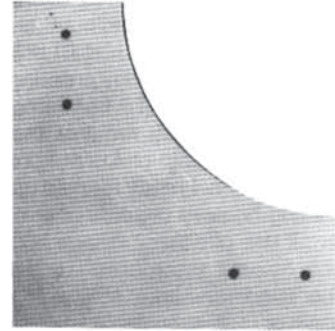
Fittings for Raceway



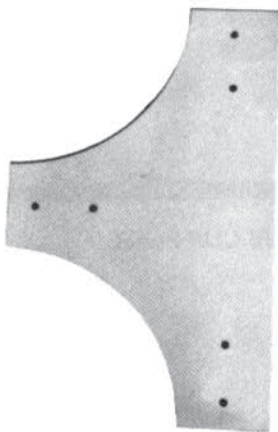
FLAT CONNECTOR



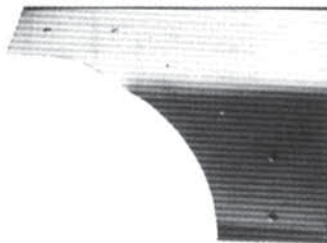
CHANNEL CONNECTOR



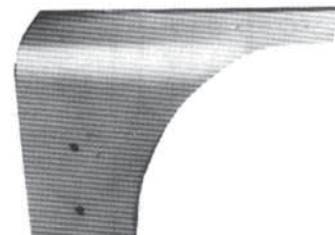
FLAT CONNECTOR



FLAT HORIZONTAL TEE



RIGHT-HAND DROPOUT ELBOW



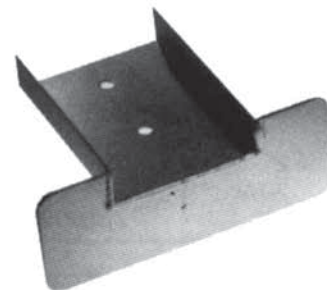
LIFT-HAND DROPOUT ELBOW



DROPOUT TEE



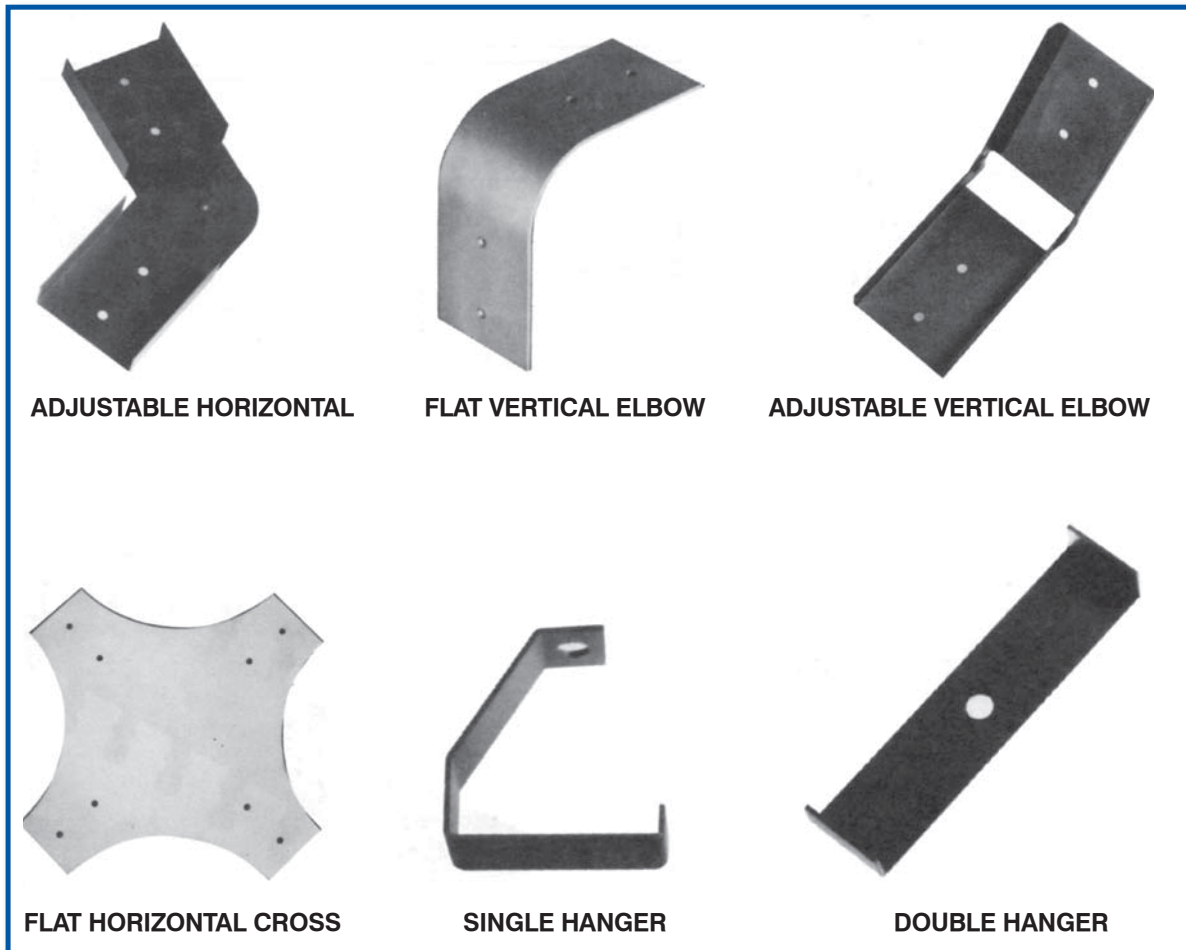
WALL BRACKET



CHANNEL-TO-BOX



Fittings for Raceway



ADJUSTABLE HORIZONTAL

FLAT VERTICAL ELBOW

ADJUSTABLE VERTICAL ELBOW

FLAT HORIZONTAL CROSS

SINGLE HANGER

DOUBLE HANGER

PART NO.	ALUMINUM	GALVANIZED	STAINLESS
FLAT CONNECTOR	AL**FCN	PG**FCN.	SS**FCN
CHANNEL CONNECTOR	AL**CN	PG**CN.	SS**CN
FLAT HORIZONTAL ELBOW	AL**FHE	PG**FHE.	SS**FHE
ADJUSTABLE HORIZONTAL ELBOW	AL**AHE	PG**AHE.	SS**AHE
FLAT VERTICAL ELBOW	AL**FVE	PG**FVE	SS**FVE
ADJUSTABLE VERTICAL ELBOW.	AL**AVE	PG**AVE	SS**AVE
FLAT HORIZONTAL TEE	AL**FHT	PG**FHT.	SS**FHT
RIGHT-HAND DROPOUT ELBOW.	AL**RDO.	PG**RDO	SS**RDO
LEFT-HAND DROPOUT.	AL**LDO	PG**LDO.	SS**LDO
FLAT HORIZONTAL CROSS	AL**FHC.	PG**FHC.	SS**FHC
SINGLE HANGER	AL**SH	PG**SH.	SS**SH
DOUBLE HANGER.	AL**DH	PG**DH.	SS**DH
DROPOUT TEE	AL**DOT	PG**DOT	SS**DOT
WALL BRACKET	AL**WB.	PG**WB	SS**WB
CHANNEL TO BOX CONNECTOR	AL**CB	PG**CB.	SS**CB

** - FOR 1" W. USE 10, FOR 1-1/2" W. USE 15, FOR 2-1/2" W. USE 25, FOR 3-3/8 W. USE 33, FOR 3-3/4" W. USE 37